

where are we located



Located in the Center of Athens, Greece

Address: *104 Aiolou str, Athens*

Tel: *+30 210 3218488*

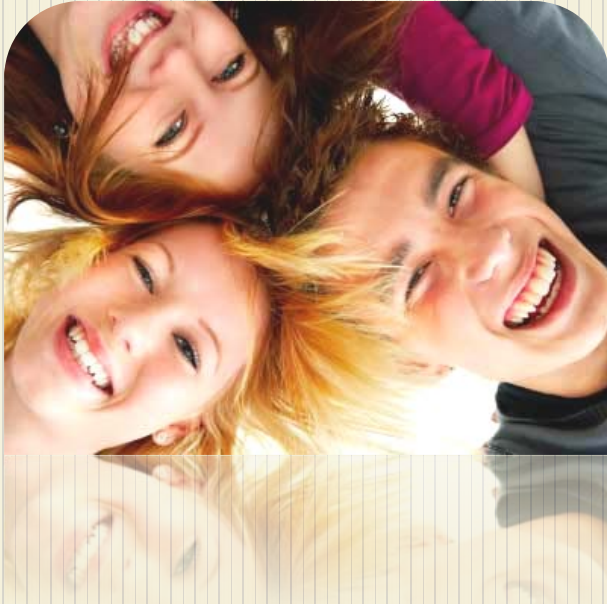
+30 210 3253876

Mail: *info@kardiapaidiou.gr*

kardiap@yahoo.gr

Web: *www.kardiapaidiou.gr*

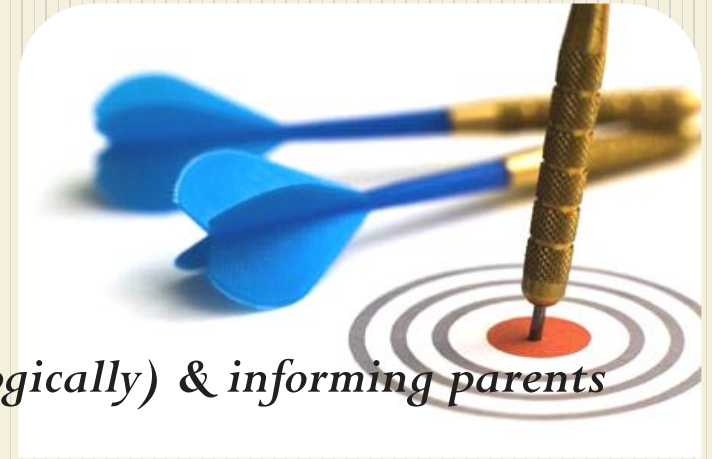
who do we aim to help



- Children & Adults *with Congenital Heart Disease (CHD)*
- Their families & Caretakers

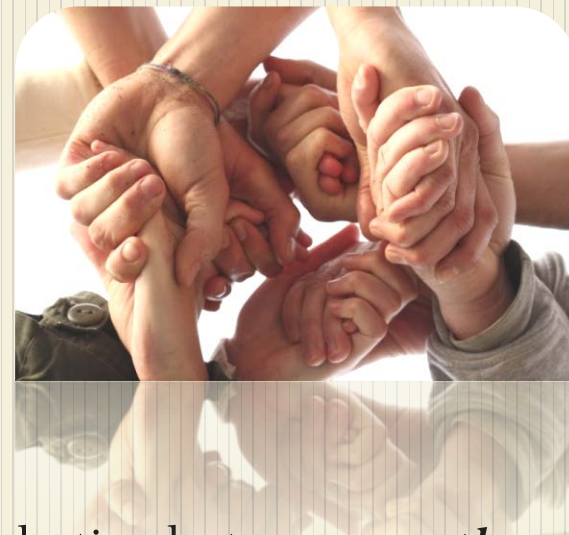
CHD in Greece appears with a frequency of 0,8%. It is the most common birth defect and it causes more deaths in the first year of life, than any other birth defect.

basic goals of Child's Heart



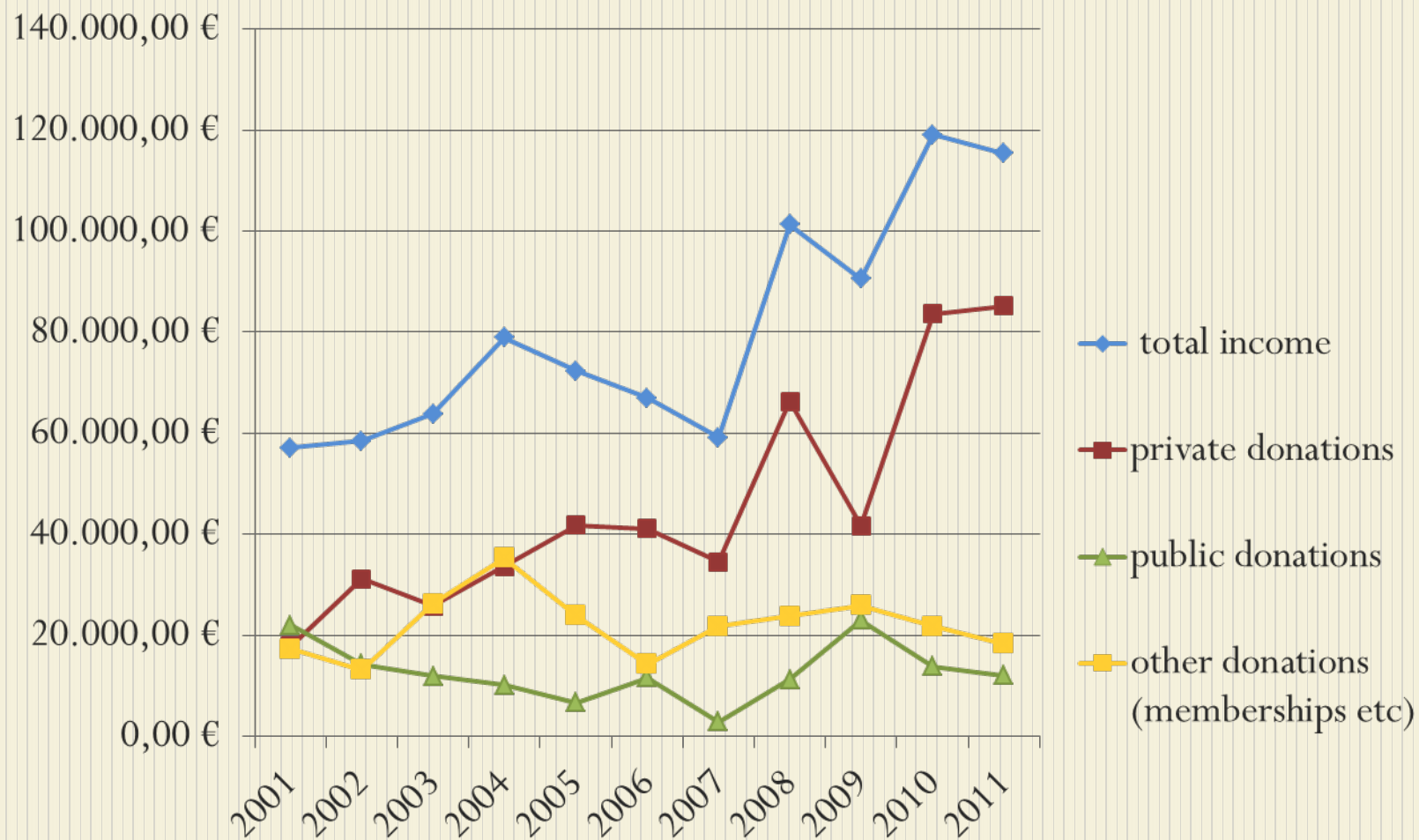
- *Educating, supporting (financially or psychologically) & informing parents* of CHD children.
- *Reinforcement of our country's scientific potential & technical equipment*, in order to further improve scientific research, laboratory possibilities and treatment of children suffering from CHD.
- *Acknowledgement by the Social Insurance of the high health care costs* and coverage of all related expenses required for the treatment of children with CHD mainly in Greece or even abroad, if a need for it arises.
- *Update of Greek legislation* that has to deal with the social standing of CHD children & adults.
- *Collect donations* through European Funding Programs, donors, sponsorships & memberships.
- *Collaborate with similar European Foundations or Federations & personalities* or legal entities which share similar goals.

financial aids from Child's Heart



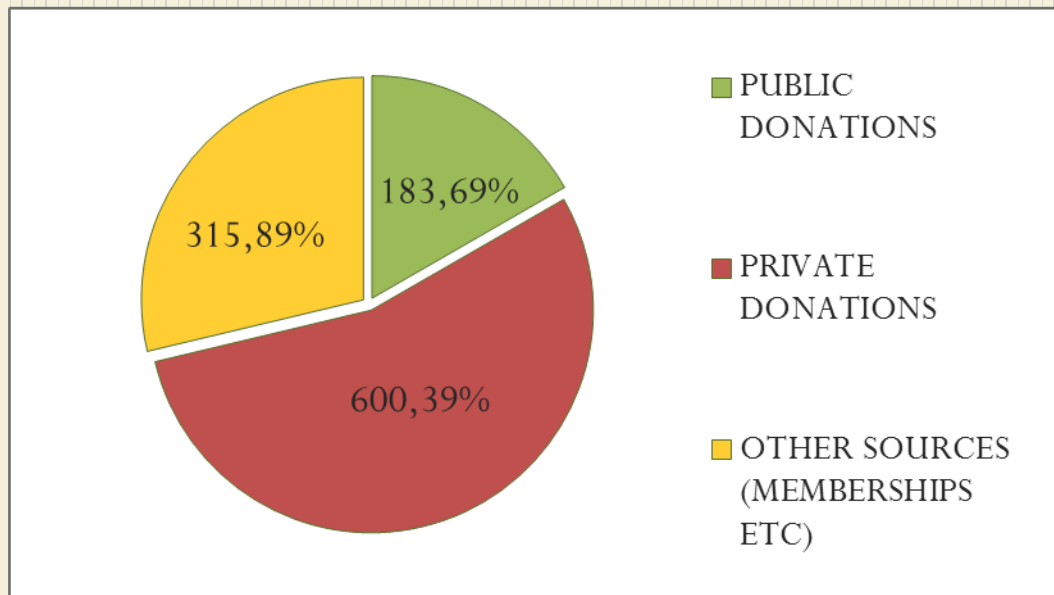
- The majority of the Association's aids are destined *to cover the accommodation costs of the poor or uninsured families* that come from the province or the islands.
- In Greece the Insurance Funds cover not all, but part of the treatment expenditures and medical tests of the CHD children. However they *do not cover doctors' fees*, which, in turn, the Association is called upon to do.
- Please note here, that *the Association's functional costs are minimal*, as two employees are occupied in the office daily and two volunteers offer their work free of charge.

revenues flow diagram since 2001



donation percentages

- Most of Child's Heart yearly income derives from its private donors: supermarket chains, banks & pharmaceutical industries.
- Public donations are granted by the Region of Attica, the National Lottery & the Manpower Employment Organization.
- Memberships, event organizations, lotteries & bazaars that take place during the year, are estimated as another considerable source of Child's Heart income.



attracting donors

- Through the distribution of Child's Heart *printed material* (“Guide for Parents”, “Demonstration of Courage” & “Michalis Heart”).
- With the participation in *charity concerts, marathons*.
- With the projection of our *two TV spots*. (Congenital Heart Awareness Day & “Child's Heart Home”)
- Through the *organization of lotteries and bazaars*.
- With the participation in various social events with *our piggybank*, (baby showers, birthday parties, funerals)
- Through the use of the Internet & *Social Media*.



accessing EU funds

- Although we are aware that EU provides NGOs with numerous funding opportunities, few know how to access them.
- Since 1983 year of Child's Heart establishment, the Association tried once (in 2004), to access an EU funding program especially for patients' organizations, but unfortunately with no luck at all.
- The submission procedure to the EU funding programs is far too complicated and it is necessary for an NGO like ours, to turn to specialized agencies in order to access them.



what happens now in Greece

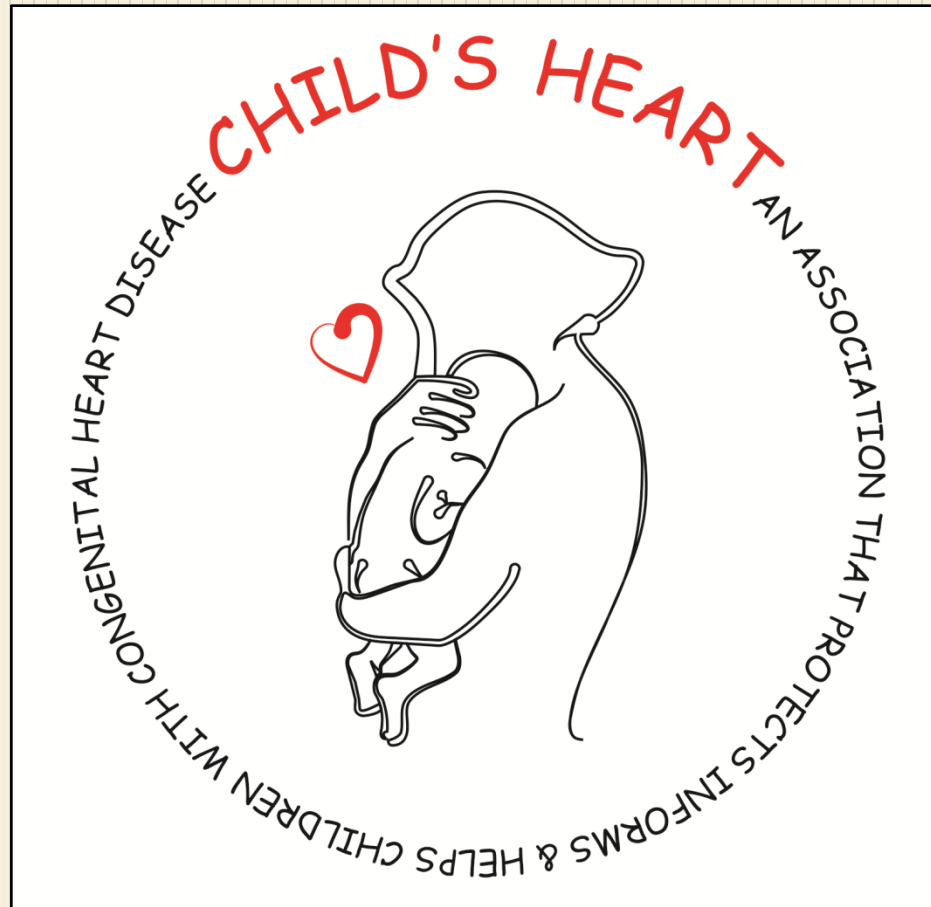
- Due to Greece's Recession, *the Government Funding towards the Association is minimal* and, it has reduced dramatically especially the last two years.
- Children suffering from CHD are children with disabilities. The allocation of the level of disability by the Center of Disability Accreditation, delays unjustifiably, *which results in a long delay in the allocation of the welfare allowances.*



what happens now in Greece



- The Pediatric Cardiac & Surgery Clinics in the “Children’s Public Hospital” the one and only State Hospital, *has remained closed for over a year*, due to operational problems, *resulting in the increase of the number of children who need immediate surgical intervention*, with a significant risk to their health.
- The two Private Clinics that remain, continue to provide their services to young patients from all over Greece. That is where the CHD children and their families turn to nowadays, thus, *making families migrate to Athens for longer periods of time* and causing their expenses increase dramatically.



Thank you EPF!