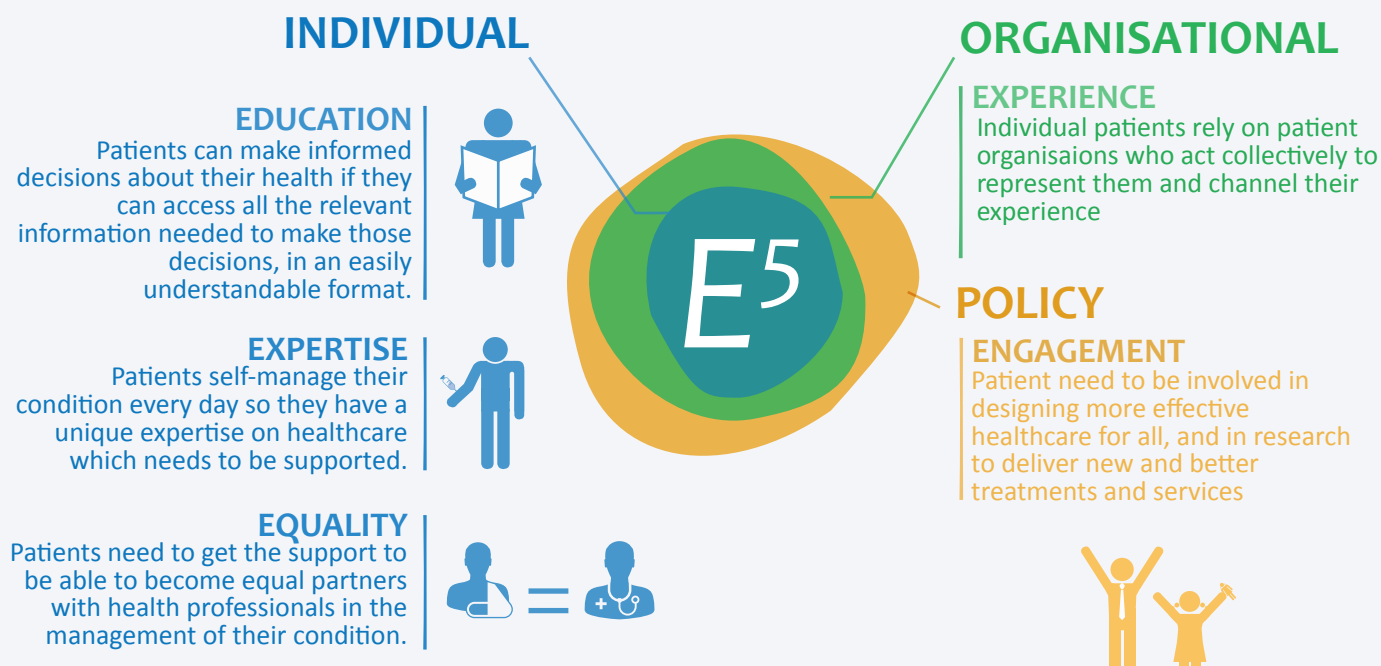


PATIENTS PRESCRIBE E⁵ FOR SUSTAINABLE HEALTH SYSTEM



#PatientsprescribeE

POOR HEALTH LITERACY ACCOUNTS FOR:



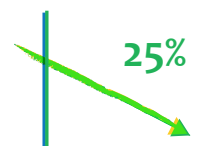
EMPOWERMENT



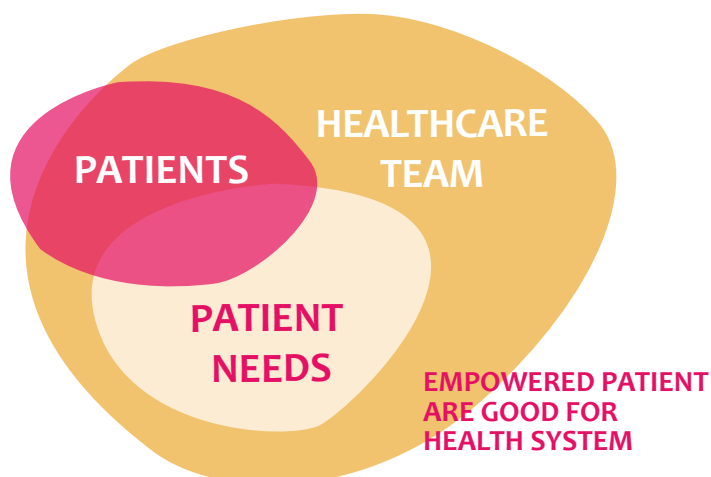
SHARED DECISION-MAKING LEAD TO:

Reduction of elective surgeries

Better health outcomes and adherence to therapies



EMPOWERED PATIENTS WANT TO BE PART OF THE HEALTHCARE TEAM



- WE** make informed choices about our treatment and care
- WE** have a better relationship with health professionals
- WE** are committed to adhering to our treatment
- WE** are willing and able to take more responsibility for our care
- WE** take preventive measures and seek earlier diagnosis which reduces hospitalisation and emergency visits

...ALL OF THIS CAN REDUCE HEALTHCARE COSTS IN THE LONG RUN.